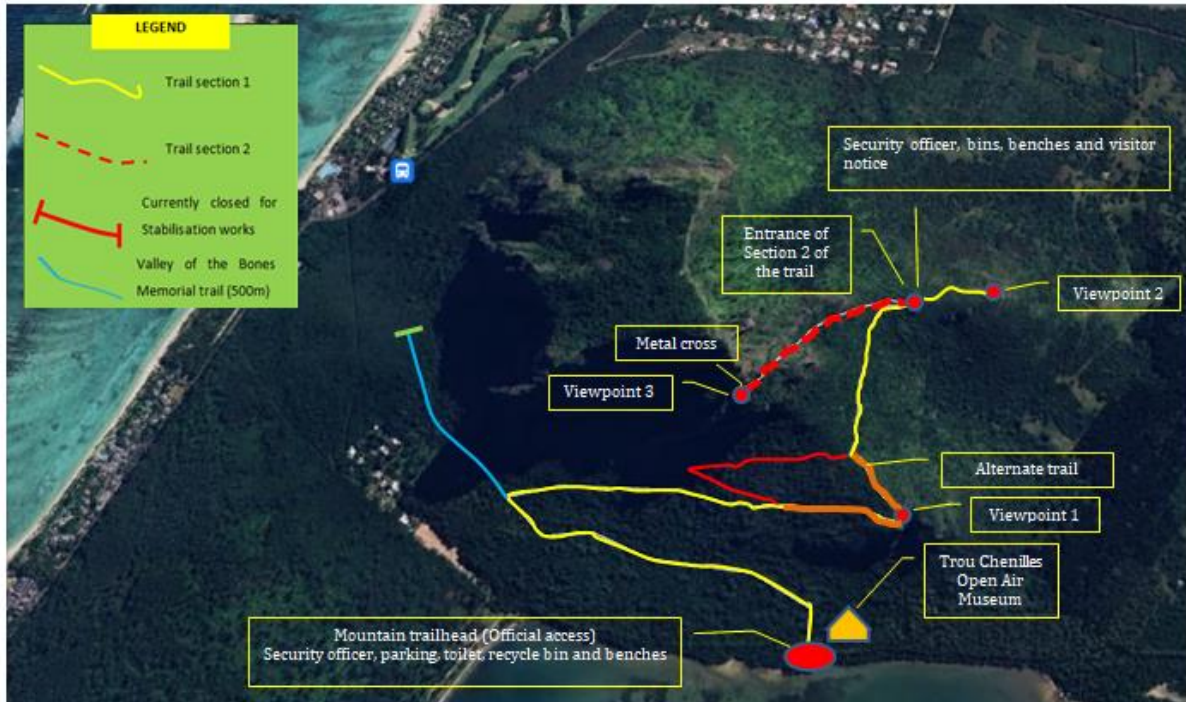


# LE MORNE CULTURAL LANDSCAPE WORLD HERITAGE SITE

## GENERAL PRACTICAL INFORMATION FOR VISITORS

### ACCESS TO LE MORNE BRABANT MOUNTAIN



Pin location for official access to Le Morne Brabant

Mountain: <https://maps.app.goo.gl/wt4ZZFdpJS5oofsM6>

# Mountain trail

**Opening and closing time: 7.00 – 16.00**

**Days: Monday – Sunday including public holidays**

**Latest time for mountain hiking: 14.30**

**For your own safety and security, the trail is closed in the following circumstances:**

- **Heavy rain warning**
- **Torrential rain warning**
- **As from Cyclone warning class II**
  - **Landslide / rockfalls**
- **Other unpredicted hazards identified**

## **Trail description:**

### **Section 1**

The trail starts from the trailhead passing through Viewpoint 1 (first mountain plateau) and ends at viewpoint 2 (second plateau of the mountain)

**Distance:** 2.53km

**Trail width:** Varies between 1m - 2.5 m

**Grade:** Grade 1

**Elevation at start:** 1.5m

**Elevation at end:** 260m

**Characteristics:** Historically significant, surrounded by endemic/indigenous plants, may be exposed to risk of falling if one approaches near the cliff, slippery in wet conditions, easy climbing.

### **Section 2**

Section 2 of the trail starts from Viewpoint 2 (second plateau) and ends at the metal cross. It runs up a gully that is a natural waterway during rainfall. The gully is also a collection point for loose boulders and rocks. At plateau 2 there is signage with information relevant to the trail leading to the cross that you have to abide with. Hikers climbing up this section should acknowledge that it may be hazardous to do so and it is being done at their own risk. Thus, filling of the Liability Form is mandatory at the trailhead of Section 2.

**Characteristics:** Historically significant, ravine, high altitude, rock climbing, gully, loose rocks, risk of rockfalls, slippery in wet conditions, exposed to strong wind, not accessible with vehicles in case of emergency, surrounded by endemic/indigenous plants, dangerous, steepness, extreme terrain, guiding by a qualified guide recommended.

**Distance:** 760m

**Width:** varies between 80cm – 1.5m

**Grade:** Grade 3

**Elevation at start:** 260m

**Elevation at end:** 492m

In view to enhancing your experience, ensuring your safety and security and preserving Le Morne Cultural Landscape for generations to come, we kindly request you to observe the following during your visit:

### **1. Responsibility, safety and security**

- Always enter through the official entrance (The trailhead). To help you find the exact location, please click on the following google map link: <https://maps.app.goo.gl/wt4ZZFdpJS5oofsM6>. Le Morne Heritage Trust Fund will not be held responsible for any mishaps that may arise if visitors access the mountain from other areas.
- Always fill the visitor record book at the trailhead and enter the appropriate information about you, including your telephone number and do not forget to record your checkout time when you leave the trailhead. Any person entering through any other access is not accounted for.
- If you opt for climbing up section 2 of the trail, please fill in the Release of Liability Form that is provided by the security officer.
- Please consider your time before hiking up the mountain as you may not have enough time to climb down the mountain after the closing time. The latest time for hiking up is 14.30. Please take all necessary precautions to reach down the trailhead by latest 16.00 before the closing of the entrance gate.
- Please comply with all signs on the site and be mindful of your steps at all times and take all necessary precautions not climb on loose stones.
- There are areas where landslide has occurred and which are still exposed to such risk. Please avoid unsafe situations and hike only in the areas and trails that are designated and intended for hiking and sightseeing and respect directional and warning signage.
- Please avoid climbing up section 2 of the trail in case of the following:
  - You are under 13 years old;
  - Rainfall and strong wind conditions;
  - You do not enjoy a good health condition;
  - You are not in good physical condition;
  - You are uneasy at high altitude;
  - You are not appropriately dressed and equipped;
  - You find that the trail is unsafe to climb; and
  - You do not know the trail.
- The hiking trail ends at the metal cross. Please do not over-climb the mountain beyond this area.
- Please do not throw or roll stones on the mountains.
- Always collaborate and respect the security officers and guides (if accompanied) and be ready to help others in the event of an emergency or accident.
- Please alert uninformed visitors to potential dangers, where necessary.
- Please adopt respectful, courteous and responsible behavior towards other visitors.

- When crossing other hikers (especially on section 2 of the trail), give priority to hikers hiking uphill. Upon seeing them, wait in a secured position.
- While hiking section 2 of the trail, please keep an appropriate distance between hikers for your own safety and security. Please avoid overtaking other hikers on certain areas of this section where you find it is not cautious to do so.
- Respect the capacity of viewpoint areas (especially the metal cross) at section 2 of the trail as well as resting spots like benches. Give your place to other hikers arriving when the maximum capacity has been reached.
- In general, adopt a safe behavior to avoid situations requiring emergency interventions especially on section 2 of the trail.

## **2. Protection of the natural environment**

Le Morne Brabant Mountain is home to a wide variety of endemic and indigenous plant and animal species and is ecologically sensitive. Carefully consider the consequences of your actions on the environment and the enjoyment of future visitors to the site.

- Removal of existing vegetation from the mountain permanently alters the natural environment. Please do not pick, collect, remove the habitat and damage plants, trees and shrubs along the hiking trail.
- Avoid as much as possible the use of trees and branches for progression aid except when necessary for your safety.
- Please do not make graffiti on plants.
- Please use the toilet facility at the trailhead as far as possible.

Please ensure that your hiking site remains beautiful. Litter on the ground also degrades natural areas and kills plants and animals.

- Dispose of your litters in a hygienic and environmentally responsible manner. In case the bins are filled with litters, please do not leave any litter on the trail, but put it in a bag and dispose of it in a bin at the entrance in the eco-bin or at another space provided for it.

## **3. Protection of the cultural heritage**

The Le Morne Brabant Mountain was used as a place of refuge for runaway enslaved and was a former settlement area known as Trou Chenille and Makak which were nestled at the foot of the mountain.

- Please do not move and collect archaeological objects (e.g; pottery, bones, stones and porcelains) if found on site, but contact the Le Morne Heritage Trust Fund for appropriate action.

### ***3.1 Valley of the Bones Memorial trail***

The Valley of the Bones also known as Belle Vue was the cliff at the foot of the mountain where maroons would have landed after having jumped off from the summit of Le Morne Brabant Mountain instead of being recaptured. The trail (in blue on the map) of 500m should be used as a pilgrimage trail for cultural and spiritual nourishment and reflection.

- Stay on designated and marked path and do not venture off into the surrounding areas;
- This trail is home to a variety of indigenous/endemic plant species. Please respect the natural environment;
- Please do not move and collect archaeological objects (e.g; pottery, bones, stones and porcelains) if found on site, but contact the Le Morne Heritage Trust Fund for appropriate action.

#### **4. Smoking and fire**

Le Morne Brabant Mountain is a smoke free area. Smoking cigarettes disturbs others and cigarettes can start bush fires.

- Please do not light fires and fireplaces.
- No camping is allowed on the mountain

#### **5. Noise**

- Le Morne Brabant Mountain is also considered as a spiritual and sacred site in memory of maroons enslaved who sacrificed their life for freedom. Loud music, noise and other inappropriate behaviour is considered as disrespectful to cultural heritage and memory.

#### **6. Amenities**

Several amenities have been put in place to improve visitors' experience and increase your safety and security such as signage, toilet, benches, bins and parking area.

- Please respect these infrastructures
- Please do not displace any amenities such as bins and benches
- The metal cross on the top of section 2 of the mountain trail is a memorial representing the maroon enslaved who crossed this area to reach the mountain plateau for freedom. Please respect this memorial and avoid climbing on the top of it for selfies or making graffiti on it.


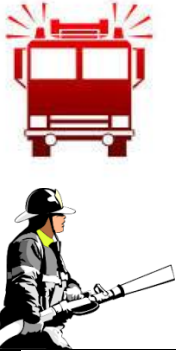


#### **7. Suitable clothing**

Wear suitable clothing, cap and athletic shoes, drinking water and dry food.

**Important notice:** Le Morne Heritage Trust Fund shall not be liable in connection with the inherent risks of your participation in the mountain climbing activity.

**Le Morne Heritage Trust Fund**  
**May 2024**

**EMERGENCY NUMBERS**

<b>Emergency service</b>		<b>Telephone number</b>
	<b>Police Station (La Gaulette)</b>	<b>451 1364</b> <b>451 6377</b> <b>451 6374</b>  <b>999</b>
	<b>Fire Rescue Services (Tamarin)</b>	<b>483 1503</b> <b>483 1504</b>  <b>115</b>
	<b>Dr. Yves Cantin Hospital (Black River)</b>  <b>Ambulance Service</b>	<b>483 6683</b> <b>483 6684</b>  <b>114</b>
	<b>Le Morne Heritage Trust Fund</b>	<b>451 5759</b>